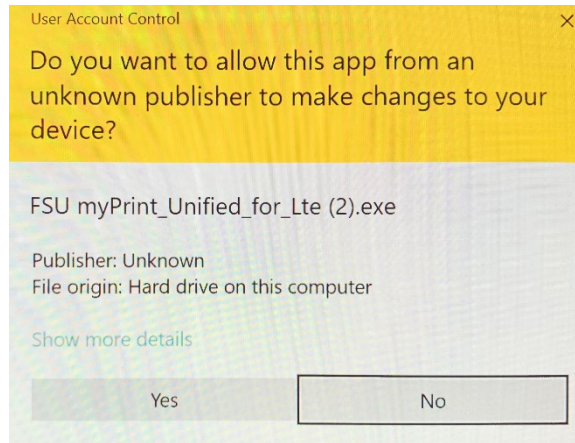
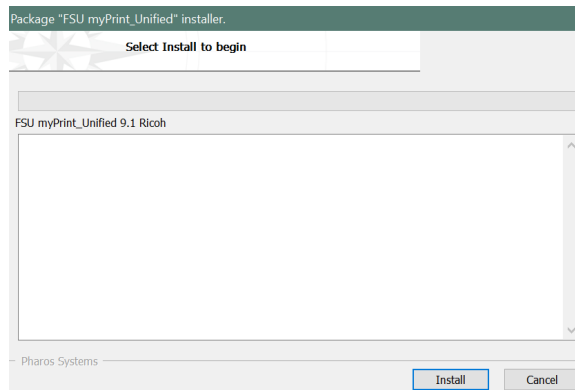


FSU myPrint Windows Computers Installation

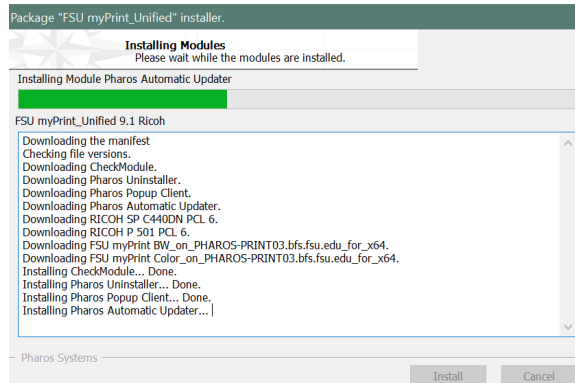
1. Download the [FSU myPrint Unified Driver](#)
2. Click on FSU **myPrint_Unified_for_Lte .exe** at the bottom of the browser window
3. Click on “Yes” in the *User Account Control* window



4. Click on “Install”



5. Wait for installation to complete



6. Click on “Finish”

